

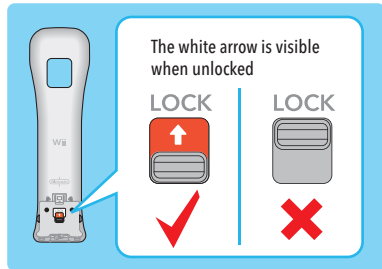
Wii MotionPlus™ Installation Guide

IMPORTANT: PLEASE READ THE SEPARATE OPERATIONS MANUAL INCLUDED WITH THIS PRODUCT BEFORE USING WII MOTIONPLUS.

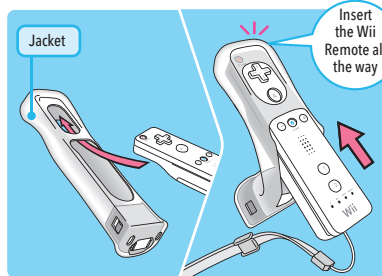
Installing Wii MotionPlus on your Wii Remote™

- Remove the original Wii Remote Jacket from the Wii Remote before installing Wii MotionPlus. Retain the Wii Remote Jacket for future use if you remove Wii MotionPlus.
- The Wii MotionPlus accessory can be left installed on your Wii Remote even with games that do not include Wii MotionPlus features. You do not need to remove it to play these games.
- If you need to replace the batteries in the Wii Remote, please refer to the separate Wii MotionPlus Operations Manual included with this accessory for instructions.
- If this accessory will be used by young children, an adult should assist with the installation procedure.

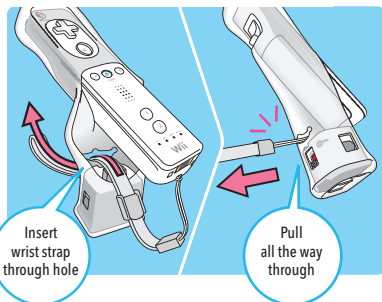
- 1** Make sure the lock on the back of the accessory is in the unlocked position, with the arrow visible.



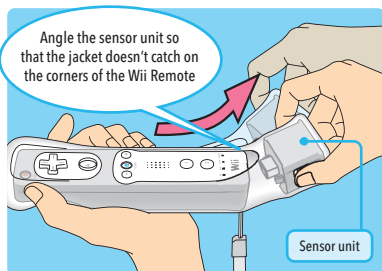
- 2** Insert the Wii Remote all the way into the Wii MotionPlus Jacket.



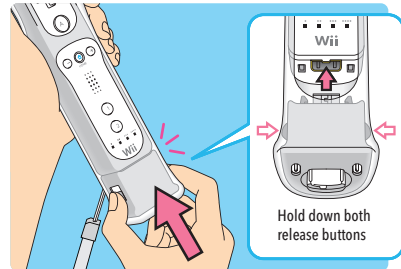
- 3** Insert the wrist strap through the hole in the back of the jacket and pull completely through.



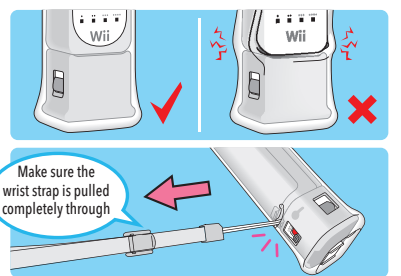
- 4** While twisting slightly, gently pull the sensor unit down and over the end of the Wii Remote.



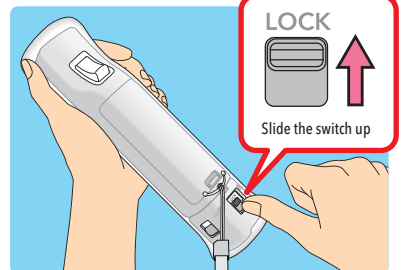
- 5** Hold down the release buttons on both sides of the accessory and insert the plug into the External Extension Connector on the bottom of the Wii Remote.



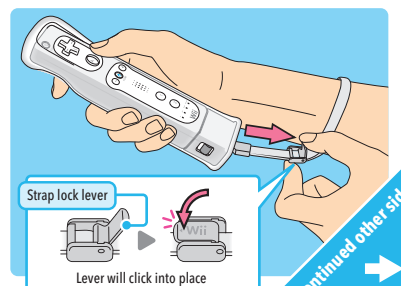
- 6** Make sure that neither the wrist strap or jacket are pinched between the Wii Remote and the accessory.



- 7** Lock the accessory in place by sliding the switch in the direction of the arrow.



- 8** Place your hand through the wrist strap and adjust the strap lock so that it will not fall off your wrist. Close the lever to hold it in place. (Some strap locks do not have a lock lever.)

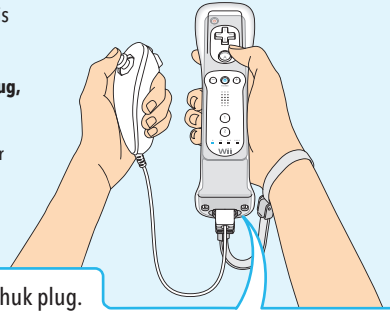


Using the Nunchuk™ accessory with Wii MotionPlus

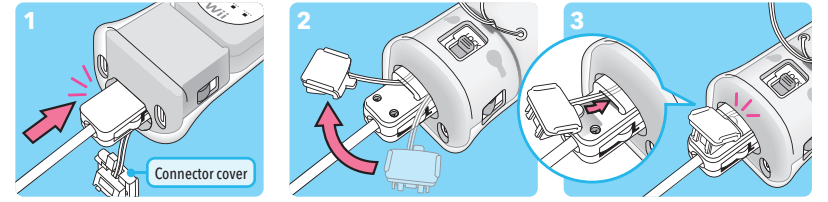
The Nunchuk can be connected while Wii MotionPlus is installed on the Wii Remote.

Be sure to fasten the connector cover to the Nunchuk plug, as shown below, for secure attachment.

Please see the separate Wii MotionPlus Operations Manual for details on connection the Nunchuk.

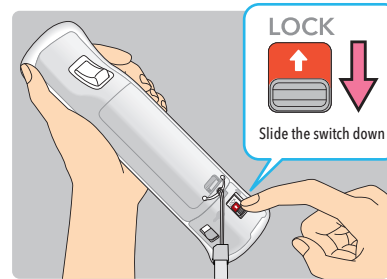


Be sure to fasten the connector cover to the Nunchuk plug.

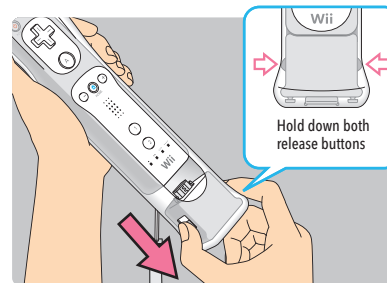


Removing Wii MotionPlus

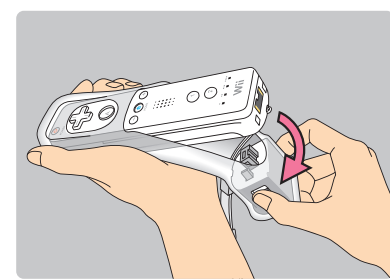
- 1** Slide the lock switch on the back of the Wii MotionPlus accessory down, towards the bottom of the Wii Remote.



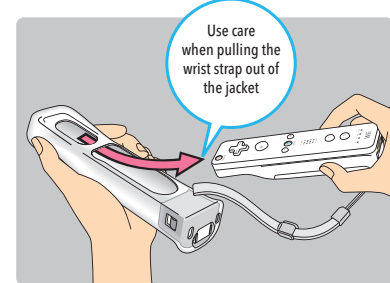
- 2** Press and hold the release buttons and pull the accessory out of the External Extension Connector on the bottom of the Wii Remote.



- 3** Gently pull the sensor unit down and towards the back of the Wii Remote.



- 4** Pull the Wii Remote out of the jacket.

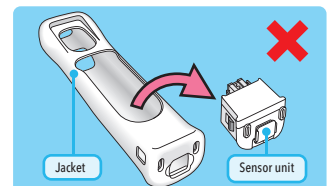


IMPORTANT: If you remove the Wii MotionPlus accessory from the Wii Remote, be sure to replace the original Wii Remote Jacket back onto the Wii Remote.

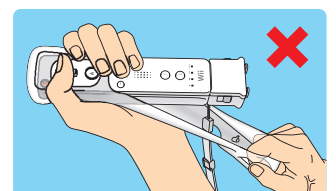
CAUTION - Damage to objects or people

The sensor unit must be used with the included jacket. Follow these guidelines to prevent damage to the Wii Remote, surrounding objects, or injury to other people.

Do not separate the sensor unit from the jacket. They must be used together for proper operation of the accessory.



When disconnecting the Wii Remote from Wii MotionPlus, or when replacing the Wii Remote batteries, do not separate the jacket from the sensor unit.



See the separate Wii MotionPlus Operations Manual included with this accessory for information on battery replacement.