

NINTENDO  **DS** ⁱ XL

**Quick-Start
Guide**



Configure the system!

Important: Be sure to read the Health and Safety Precautions Booklet and Nintendo DSi™ XL Operations Manual before use, and follow the instructions carefully. In cases where a small child will be using the system, a parent or guardian should configure the System Settings for them.

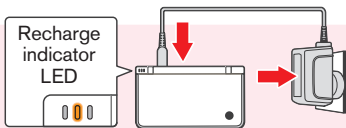
When the system is turned on for the first time, you have to configure the settings.

To do so, follow the step by step guide shown below.

(All of the screenshots show the lower screen.)

Charging the Nintendo DSi XL Rechargeable Battery Pak

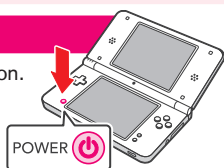
Once the recharge indicator LED has turned off, charging is complete.



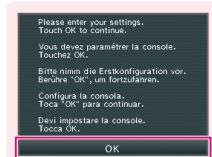
Refer to the Nintendo DSi XL Operations Manual – Basics for information on charging the battery.

1 Turn the power on

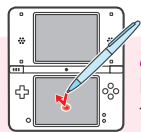
Press the POWER Button.



2 Configure the System Settings



Touch OK



Touch

Lightly press the stylus against the Touch Screen (lower screen).

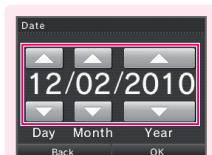
3 Choose country



Touch OK

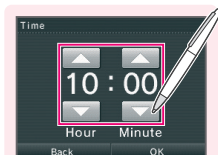
Touch your country of residence.

4 Set the date and time



Touch to set the date.

Touch OK



Touch to set the time.

Touch OK

5 Enter a name and message



Touch the keyboard and enter a name.

Touch OK



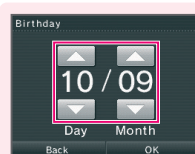
Touch the keyboard and enter a message.

Touch OK

Note:

- The maximum length for a user name is 10 characters.
- The maximum length for a message is 26 characters.
- You can add a message containing anything you like. Why not try entering a greeting?

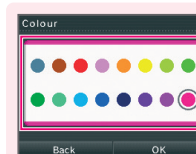
6 Set your birthday



Touch to set your birthday.

Touch OK

7 Choose a colour

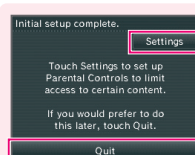


Touch a colour of your choice.

Touch OK

Note: This colour will be used in various places, such as the Nintendo DSi Menu.

8 Finish configuring the settings



Touch Quit

Configure Parental Controls

Parental Controls settings allow parents or guardians to manage what content can be used or downloaded on the Nintendo DSi XL system. Begin configuring the Parental Controls.

For more information on Parental Controls, please refer to the Nintendo DSi XL Operations Manual – Applications and Settings.

Your System Settings have now been configured. Now you're ready to take some photos!

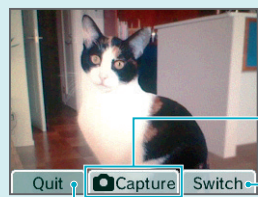
Take some photos!

After configuring the system, you'll be asked if you want to take a photo. Touch OK and try taking some photos!

1 Touch each screen as shown



2 Touch



Note: The same actions can be done by pressing the buttons shown below.



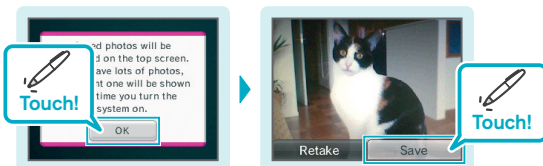
Take a photo



Switch between the inner and outer camera


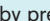
Return to Nintendo DSi Menu

3 Saving



4 Finish taking photos

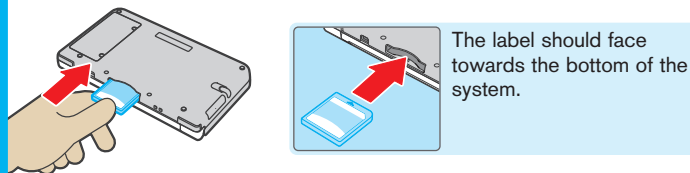


You can also take photos from within the Nintendo DSi Menu by pressing  or .

Load software!

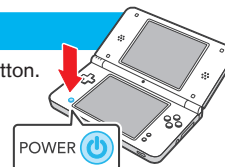
With Nintendo DSi XL you can use the following: Nintendo DS® Cards, Nintendo DSi compatible Cards and Nintendo DSi Cards. Follow the steps below to load the software.

1 Insert the software

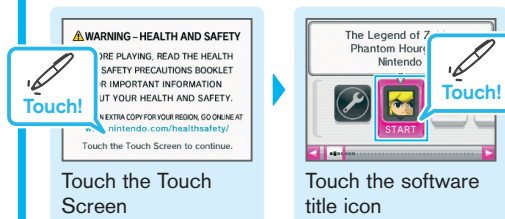


2 Turn the power on

Press the POWER Button.



3 Start the software



For further instructions, refer to the Instruction Booklet for the software you are using.

Note: This screenshot shows THE LEGEND OF ZELDA™: PHANTOM HOURGLASS, a title for Nintendo DS systems.



Introducing the built-in software



The Nintendo DSi XL system comes with a selection of built-in software applications. To start an application, touch the corresponding icon in the **Nintendo DSi Menu**.

For more information on built-in software applications, please refer to the Nintendo DSi XL Operations Manual – Applications and Settings.



Nintendo DSi Camera – Play with photos!

Aside from the normal camera functionality, Nintendo DSi Camera includes 11 different types of lens, such as Graffiti and Distortion Lens. Have fun with photos you take using the built-in cameras!



Nintendo DSi Sound – Play with sounds!

With Nintendo DSi Sound, you listen to music files stored on SD Cards. You can also adjust the pitch and speed of the audio and even have fun with your recorded voice.



Nintendo DSi Shop – Shopping for software!

You can purchase software via Nintendo DSi Shop.

Note: In order to use Nintendo DSi Shop, you will need an internet connection and Nintendo Points.



DS Download Play

Download demo versions of titles or go head-to-head with others using wireless game play modes.



PictoChat™

Send and receive wireless messages and pictures from other Nintendo DS system users (Nintendo DS, Nintendo DS® Lite, Nintendo DSi and Nintendo DSi XL).



Nintendo DSi Browser

Connect to the internet and browse web-based content.



System Settings

Adjust date and time settings, and calibrate the Touch Screen.

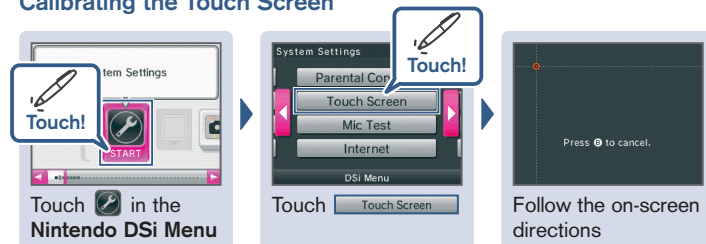


If the Touch Screen is not responding properly

If the Touch Screen is not responding properly or if you feel the stylus contact point is not aligned correctly, take the following steps to recalibrate the Touch Screen.

Note: If you have applied a commercially-available protective sheet to your Touch Screen, make sure it has been applied correctly before attempting to calibrate the Touch Screen.

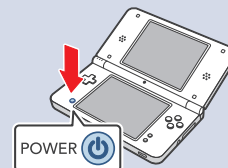
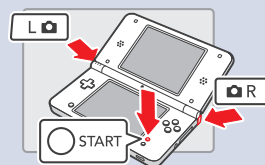
Calibrating the Touch Screen



When you cannot operate the Touch Screen properly

If you are having trouble operating the Touch Screen, take the following steps when turning on the power.

- 1 While pressing and holding L Button + R Button + START...
- 2 ...press the POWER Button.





PRINTED IN CHINA